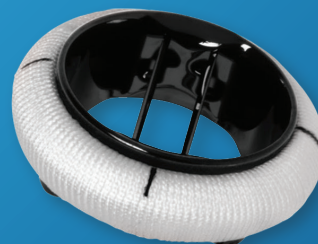
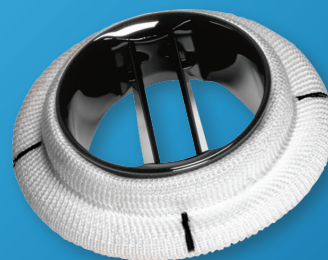
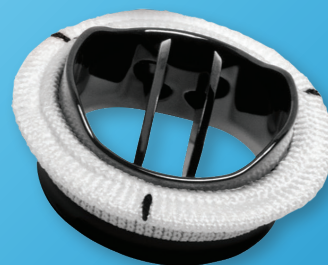


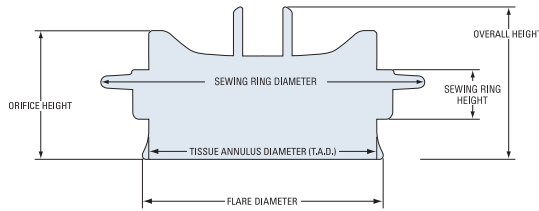
DESIGNED FOR LIFE

ON-X[®] PROSTHETIC HEART VALVE CATALOGUE



On-X Valve Specifications

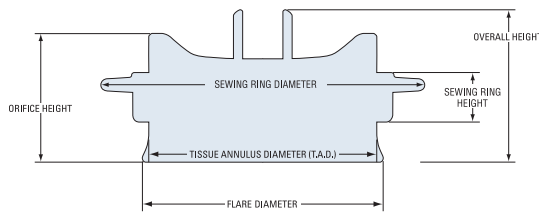
On-X Prosthetic Aortic Valve with Anatomic Sewing Ring¹



19 mm to 27/29 mm

| Valve Size | Catalogue Number | Tissue Annulus Diameter (mm) | Internal Diameter (mm) | Flare Diameter (mm) | Sewing Ring Diameter ² (mm) | Overall Height (mm) | Orifice Height (mm) | Internal Orifice Area (cm ²) |
|------------|------------------|------------------------------|------------------------|---------------------|--|---------------------|---------------------|--|
| 19 | ONXANE-19 | 19 | 17.4 | 20.1 | 27 | 13.3 | 10.8 | 2.28 |
| 21 | ONXANE-21 | 21 | 19.4 | 22.2 | 30 | 14.7 | 11.9 | 2.84 |
| 23 | ONXANE-23 | 23 | 21.4 | 24.3 | 33 | 16.1 | 13.1 | 3.44 |
| 25 | ONXANE-25 | 25 | 23.4 | 26.4 | 34 | 17.8 | 14.2 | 4.11 |
| 27/29 | ONXANE-27/29 | 27-29 | 23.4 | 26.4 | 36 | 17.8 | 14.2 | 4.11 |

On-X Prosthetic Aortic Valve with Conform-X Sewing Ring¹



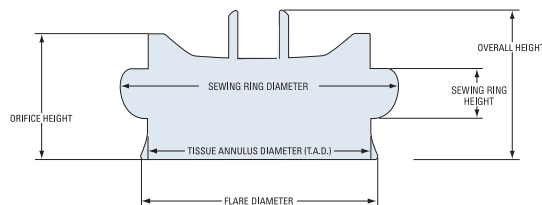
19 mm to 25 mm



27/29 mm

| Valve Size | Catalogue Number | Tissue Annulus Diameter (mm) | Internal Diameter (mm) | Flare Diameter (mm) | Sewing Ring Diameter ² (mm) | Overall Height (mm) | Orifice Height (mm) | Internal Orifice Area (cm ²) |
|------------|------------------|------------------------------|------------------------|---------------------|--|---------------------|---------------------|--|
| 19 | ONXACE-19 | 19 | 17.4 | 20.1 | 27 | 13.3 | 10.8 | 2.28 |
| 21 | ONXACE-21 | 21 | 19.4 | 22.2 | 30 | 14.7 | 11.9 | 2.84 |
| 23 | ONXACE-23 | 23 | 21.4 | 24.3 | 33 | 16.1 | 13.1 | 3.44 |
| 25 | ONXACE-25 | 25 | 23.4 | 26.4 | 34 | 17.8 | 14.2 | 4.11 |
| 27/29 | ONXACE-27/29 | 27-29 | 23.4 | 26.4 | 36 | 17.8 | 14.2 | 4.11 |

On-X Prosthetic Aortic Valve with Standard Sewing Ring¹



19 mm to 25 mm



27/29 mm

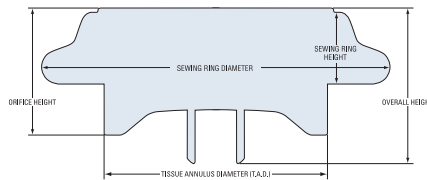
| Valve Size | Catalogue Number | Tissue Annulus Diameter (mm) | Internal Diameter (mm) | Flare Diameter (mm) | Sewing Ring Diameter ² (mm) | Overall Height (mm) | Orifice Height (mm) | Internal Orifice Area (cm ²) |
|------------|------------------|------------------------------|------------------------|---------------------|--|---------------------|---------------------|--|
| 19 | ONXAE-19 | 19 | 17.4 | 20.1 | 23 | 13.3 | 10.8 | 2.28 |
| 21 | ONXAE-21 | 21 | 19.4 | 22.2 | 26 | 14.7 | 11.9 | 2.84 |
| 23 | ONXAE-23 | 23 | 21.4 | 24.3 | 29 | 16.1 | 13.1 | 3.44 |
| 25 | ONXAE-25 | 25 | 23.4 | 26.4 | 32 | 17.8 | 14.2 | 4.11 |
| 27/29 | ONXAE-27/29 | 27-29 | 23.4 | 26.4 | 34 | 17.8 | 14.2 | 4.11 |

On-X Ascending Aortic Prosthesis with the Vascutek Gelweave Valsalva™ Graft³



| Valve Size | Catalogue Number | Valve Internal Diameter (mm) | Valve Orifice Area with Leaflets in Place (cm ²) | Sewing Ring Diameter ² (mm) | Graft Diameter (mm) | Graft Length (cm) |
|------------|------------------|------------------------------|--|--|---------------------|-------------------|
| 19 | ONXAAP-19 | 17.4 | 2.00 | 27 | 20 | 11 |
| 21 | ONXAAP-21 | 19.4 | 2.53 | 30 | 22 | 11 |
| 23 | ONXAAP-23 | 21.4 | 3.13 | 33 | 24 | 11 |
| 25 | ONXAAP-25 | 23.4 | 3.73 | 34 | 26 | 11 |
| 27/29 | ONXAAP-27/29 | 23.4 | 3.73 | 36 | 26 | 11 |

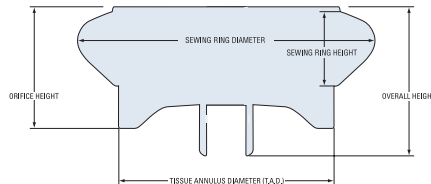
On-X Prosthetic Mitral Valve with Conform-X Sewing Ring¹



27/29 mm and 31/33 mm

| Valve Size | Catalogue Number | Tissue Annulus Diameter (mm) | Internal Diameter (mm) | Sewing Ring Diameter ² (mm) | Overall Height (mm) | Orifice Height (mm) | Internal Orifice Area (cm ²) |
|------------|------------------|------------------------------|------------------------|--|---------------------|---------------------|--|
| 25/33 | ONXMC-25/33 | 25-33 | 23.4 | 39 | 17.8 | 14.2 | 4.11 |

On-X Prosthetic Mitral Valve with Standard Sewing Ring¹



23 mm and 25 mm



27/29 mm and 31/33 mm

| Valve Size | Catalogue Number | Tissue Annulus Diameter (mm) | Internal Diameter (mm) | Sewing Ring Diameter ² (mm) | Overall Height (mm) | Orifice Height (mm) | Internal Orifice Area (cm ²) |
|------------|------------------|------------------------------|------------------------|--|---------------------|---------------------|--|
| 23 | ONXM-23 | 23 | 21.4 | 31 | 16.1 | 13.1 | 3.44 |
| 25 | ONXM-25 | 25 | 23.4 | 33 | 17.8 | 14.2 | 4.11 |
| 27/29 | ONXM-27/29 | 27-29 | 23.4 | 34 | 17.8 | 14.2 | 4.11 |
| 31/33 | ONXM-31/33 | 31-33 | 23.4 | 36 | 17.8 | 14.2 | 4.11 |

On-X Instrument Kit - Aortic and Mitral⁴

On-X Instrument Kit – Aortic and Mitral⁴

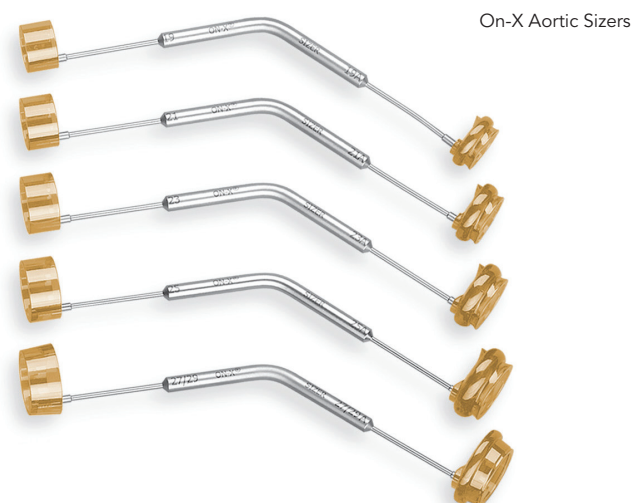
| Product/Size | Catalogue Number |
|----------------------|------------------|
| 13 instruments total | ONX13-CK |

On-X Sterilizable Tray

| Product/Size | Catalogue Number |
|----------------------------|------------------|
| Tray Only - No Instruments | ONX13-CT |

On-X Aortic Sizers

| Product/Size | Catalogue Number |
|----------------------|------------------|
| For valve size 19 | ONX13-19S |
| For valve size 21 | ONX13-21S |
| For valve size 23 | ONX13-23S |
| For valve size 25 | ONX13-25S |
| For valve size 27/29 | ONX13-27-29S |



On-X Mitral Sizers

| Product/Size | Catalogue Number |
|----------------------------------|------------------|
| For valve sizes 23, 25 and 25/33 | ONX13-23-25S |
| For valve sizes 27/29 and 31/33 | ONX13-27-33S |



On-X Rotators

| Product/Size | Catalogue Number |
|---|------------------|
| For valve size 19 | ONX12-19R |
| For valve size 21 | ONX12-21R |
| For valve size 23 | ONX12-23R |
| For valve sizes 25-33 | ONX12-25R |
| For mitral valve sizes 25-33 ⁴ | ONX13-25MR |



On-X Handle & Probe (universal)

| Product/Size | Catalogue Number |
|-------------------------------|------------------|
| Instrument Handle - All sizes | ONX12-H |
| Leaflet Probe - All sizes | ONX12-LP |

- All On-X Valve sewing rings are made from polytetrafluoroethylene (PTFE)
- Sewing rings nominal dimensions
- The Vascutek Gelweave Valsava Graft, is a product of Vascutek, a Terumo Company <http://www.vascutek.com>
- The On-X instrument kit consists of one of every instrument listed above, except for the ONX13-25MR, which is available separately upon request. Grey Sizers can be ordered through your local CryoLife representative.

EC REP Emergo Europe
Molenstraat 15 • 2513 BH The Hague • The Netherlands

 **CryoLifeEuropa**

Bramley House • The Guildway
Old Portsmouth Road • Guildford, Surrey GU3 1LR United Kingdom
Tel: +44 (0) 1483 441030 • Fax: +44 (0) 1483 452860
Email: europaorders@cryolife.com

On-X Life Technologies, Inc. is a wholly owned subsidiary of CryoLife, Inc.
The On-X prosthetic heart valves are manufactured by On-X Life Technologies, Inc.
CryoLife, the snowflake design, Life Restoring Technologies, and On-X are registered trademarks owned by CryoLife, Inc. or its subsidiaries.
All other registered trademarks are owned by their respective owners. © 2016 CryoLife, Inc. All rights reserved.

ML1011.000 (06/2016)

On-X Life Technologies, Inc.
1300 East Anderson Lane • Bldg. B
Austin, Texas 78752 USA
Tel: (512) 339-8000 • Fax: (512) 339-3636
Email: onx@onxlti.com